


Florida Bandmasters Association
2025 All State High School Jazz Band
Drum Set Styles

Note: Page 2 contains explanations for each style, resource considerations and a notation legend.

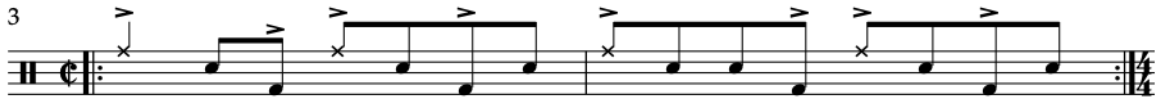
Jazz Samba
16 bars

$\text{♩} = 108$



Songo
16 bars

$\text{♩} = 120$



Shuffle
12 bars

$\text{♩} = 108$



Jazz Waltz (with brushes)
16 bars

$\text{♩} = 120$



Considerations for the STYLES portion of the FBA HS Jazz Band Drum Set Audition:

- 1) Please adhere to the marked tempos.
- 2) Please be sure to play the number of bars requested on the sheet.
- 3) It is customary to play an odd number of measures of the style and then play a fill on the last measure. For example, on the Songo, you would play the style for 7 measures and then play a fill on the 8th measure.
- 4) For further study on the Jazz Samba and the Songo, refer to the book:
Afro-Caribbean and Brazilian Rhythms for the Drums by Memo Acevedo, Kim Plainfiled, Maciek Schejbal, Adriano Santos, Frank Katz, and Chris Lacinak.
- 5) For further study on performing with brushes, refer to the book:
Phrasing and Freedom with Brushes by Anthony Stanislavski.
Also, for some tasty brush playing, listen to Ed Thigpen--drummer for the Oscar Peterson Trio.
- 6) If you would like a recording reference for a jazz shuffle, listen to:
Basically Blues by Phil Wilson.

Drum Set Legend

The diagram shows a five-line staff with various symbols for drum parts. From left to right, the symbols are: a double bar line, a quarter note, a quarter note, a quarter note, a quarter note, a quarter note with an 'x' below it, a quarter note with an 'o' above it, a quarter note with an 'x' below it, and a quarter note with an 'x' below it. Below the staff, the corresponding drum parts are listed: BD, Low tom, SD, High tom, HH w/ foot, HH w/ foot (open), Ride cym., and Crash cym.

BD Low tom SD High tom HH w/ foot HH w/ foot (open) Ride cym. Crash cym.