

# Florida Bandmasters Association



**2024 State Concert MPA**

***Vero Beach High School***

**April 22 - 24, 2024**

**Hosts – Colbert Page Howell, Jr. and Sean Srigley**

**2024 FBA State Concert MPA  
Vero Beach High School Performing Arts Center  
James M. Sammons Auditorium**

Performing Arts Center Information

The VBHS Performing Arts Center opened in January 2005 and seats 1012 persons. The hall was designed as a professional performance venue and has excellent acoustics. The stage has a complete professional sound shell (walls and ceiling). Adjudicators will be seated in the center of the mezzanine level.

Warm Up Room – Band Room in Building 4

The Band Room will be used as the Warm up Room. Any large equipment may be loaded directly into the scene shop of the Performing Arts Center instead of taking it to the warm up room.

The following equipment will be provided in the warm up room:

- Chairs
  - *If you need more than 70 chairs, please email us ahead of time.*
- Stands (40 stands available)
- Baby grand piano
- Bass Drum
- 2 Timpani (26 inch and 29 inch)
- Marimba
- Xylophone
- Vibes

Instrument Cases

It is suggested that cases be left on busses or equipment trucks. If you are not able to leave cases on the bus, please email us and let us know. We will try to accommodate you as best we can.

FBA Office

The FBA Office is in the Green Room of the PAC. Directors should check in at the FBA Office immediately upon arrival. The Fighting Indians Band Boosters will provide light refreshments for directors.

Stage Set-Up

When checking in at the FBA Office, please be sure to leave your completed set up chart. VBHS will provide a stage crew to set up your band.

### Concession Information

We will be providing a concession stand at the MPA. ***If you wish to order entrées, they must be pre ordered.***

Drinks and snacks do not require pre order.

Please see the attached concession information sheet.

### Equipment provided on stage in the PAC

- Chairs
- Stands
  - *If you need more than 85 chairs or 60 music stands, please email us ahead of time.*
- Conductor podium and stand (2 level podium is available)
- 9 foot Baldwin concert grand piano
- Percussion:
  - Timpani (4)
  - Concert Bass Drum (1)
  - Chimes (1)
  - Vibes (1)
  - Xylophone (1)
  - Marimba (2)
    - 4.3 octave AND 5 octave
  - Bells (1)
  - Vero Beach High School is not responsible for providing or loaning any percussion or equipment other than that listed above.

### Parking and Entry to Campus

- The parking areas near the Performing Arts Center are for **unloading only** prior to 2:30 p.m.
  - Personal vehicles, busses, and equipment trucks will need to park directly across the street on the north side of the campus in the Jimmy Graves Fields lot.
- After 2:30 p.m., anyone may park in the lot by the Performing Arts Center.
- Due to school dismissal traffic, there will be no bus or truck access to the loading/unloading area (parking lot by PAC) between **1:40 p.m. and 2:30 p.m. Please plan to arrive before or after this time.**

### Contact Information

- Page Howell, VBHS Band Director – 772-564-5413
- Sean Srigley, VBHS Band Director – 772-564-5451
- [veroband@yahoo.com](mailto:veroband@yahoo.com)

## Driving Directions

**SCHOOL ADDRESS: 1707 16<sup>th</sup> Street, Vero Beach 32960**

### ***From the West via State Road 60 (Also from I 95 North)***

- Go east on SR Route 60 into town (about 5 miles).
- Proceed to 43<sup>rd</sup> Avenue and look for a BP gas station on the right. Turn right (south) on 43<sup>rd</sup> Avenue.
- Proceed south to 16<sup>th</sup> Street (next light) and turn left (east).
- Pass over 27<sup>th</sup> Avenue and continue to the next light which will be 20<sup>th</sup> Avenue.
- The school is located on the right (south) corner of 20<sup>th</sup> Avenue and 16<sup>th</sup> Street.
- Equipment trucks and buses should drive past the school to the next traffic light and turn right. You will enter the campus through the big black gates.

### ***From the South via I 95***

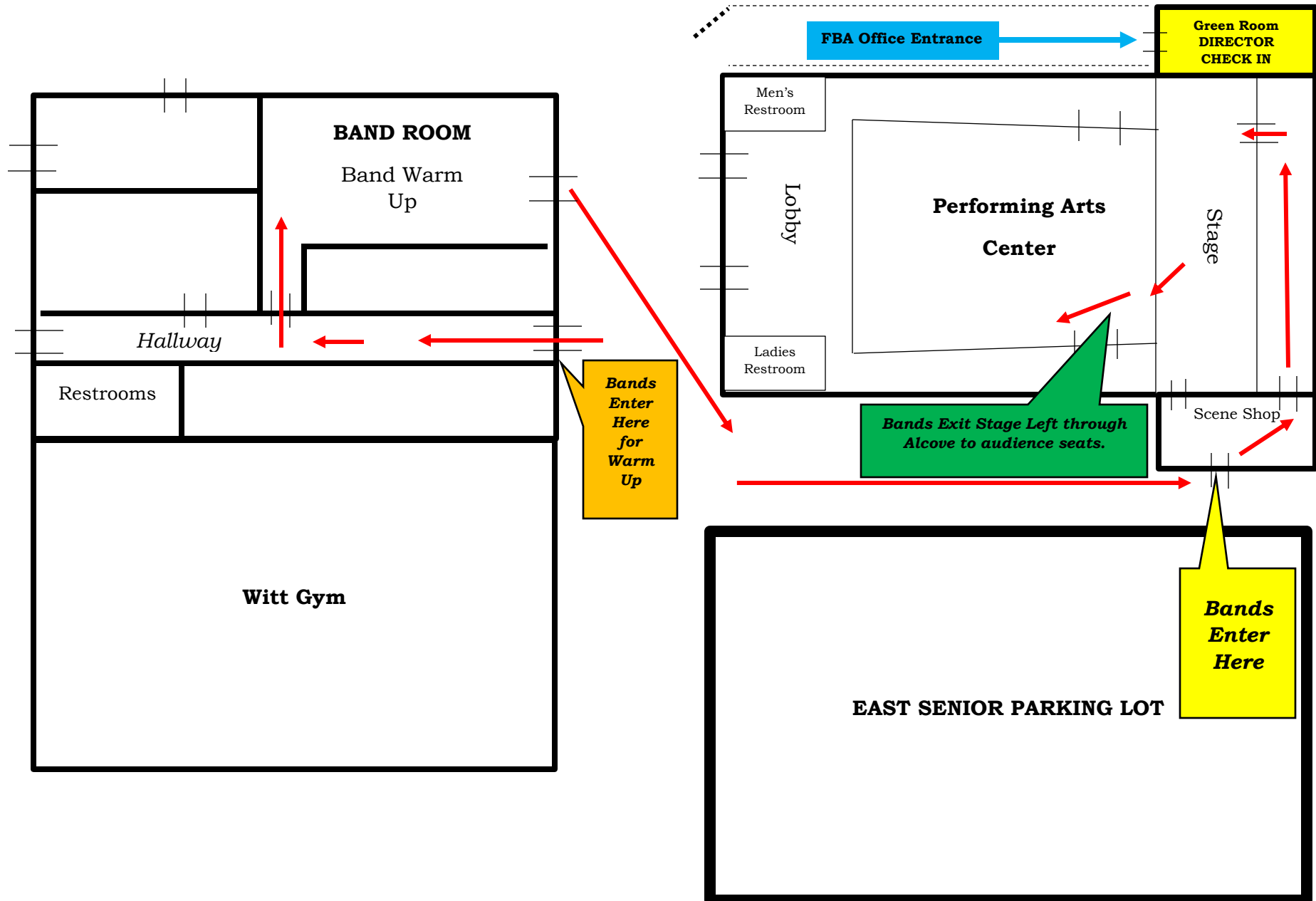
- Take I-95 North to exit 138 - Indrio Road (between Ft. Pierce and Vero Beach).
- Go East on Indrio Road to SR 607 (27<sup>th</sup> Avenue SW – 3<sup>rd</sup> traffic light once you exit I-95)
- Turn left (north) on SR713 – 27<sup>th</sup> Ave SW.
- Proceed north to 16<sup>th</sup> Street and turn right (east).
- Pass over 27<sup>th</sup> Avenue and continue to the next light which will be 20<sup>th</sup> Avenue.
- The school is located on the right (south) corner of 20<sup>th</sup> Avenue and 16<sup>th</sup> Street.
- Equipment trucks and buses should drive past the school to the next traffic light and turn right. You will enter the campus through the big black gates.

### ***From the South via US 1***

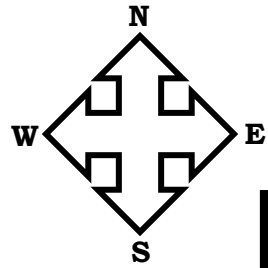
- Take U.S. 1 to 17<sup>th</sup> Street in Vero Beach.
- Turn left (west) at the Chevron station (on the left) onto 17<sup>th</sup> Street.
- 17<sup>th</sup> Street will become 16<sup>th</sup> Street as you continue.
- Get in the left lane as you proceed down 17<sup>th</sup> Street.
- Once you cross 14<sup>th</sup> Avenue, you will see the football stadium on your right.
- Buses and trucks should turn left at the traffic light just past the football stadium.
- Cars should turn left into the parking lot just past the traffic light.

# FBA State Concert MPA Map

16<sup>th</sup> Street



# VERO BEACH HIGH SCHOOL PARKING MAP



Jimmy Graves  
Fields

Car Parking – **Prior to 2:30 p.m.**

Bus & Truck Parking  
**Prior to 2:30 p.m.**

17<sup>th</sup> Ave

Band Field

Citrus Bowl  
Stadium

16<sup>th</sup> Street

NO Parking  
(Admin. Lot)

NO Parking  
(North Lot)

Class Rooms  
(Buildings 1 & 2)

Music  
Bldg.  
(Bld4)

Performing Arts Center

Admin Bldg.  
&  
Cafeteria

Courtyard

Witt Gym

Bus and Equipment  
Truck Parking  
**AFTER 2:30 p.m.**

16<sup>th</sup> Avenue

20<sup>th</sup> Ave

Class Rooms  
(Building 8)

Class Rooms  
(Building 7)

Small  
Gym

Unload busses

Busses & trucks may exit  
this gate after 2:30 p.m.

**2024**  
**FBA State Concert MPA**  
**Concessions Menu**

---

**Entrée - PRE ORDER ONLY!**

Cheese Pizza Meal	\$6.00
Pepperoni Pizza Meal	\$6.00
Chick-fil-A Sandwich Meal	\$8.00

***Meals Include:***

*1 bag of Chips & 1 Drink of choice.*

*Pizza Combos include 2 Slices.*

**WE WILL ONLY BE ORDERING ENTREES FOR BANDS THAT COMPLETE THE SURVEY.**



**Scan the code to complete  
the Concert MPA Meal  
Survey by 4/17/24.**

**Concession Stand**

**Beverages \$1**

**Coke | Diet Coke | Sprite**

**Root Beer | Gatorade | Water**

**Chips \$1**

**Candy \$1**

# 2024 – FBA State Concert MPA

## Band Info Survey & Food Head Count

Vero Beach High School welcomes all the bands participating in FBA State Concert MPA April 22nd-24<sup>th</sup>. Please complete the form so that we can better prepare for hosting State Concert MPA or Scan the QR Code to Submit online. We will contact you about meal time once the schedule has been released.

Email completed form to [vbhs.bandboosters@gmail.com](mailto:vbhs.bandboosters@gmail.com) on or before Wed, 4/17.

### School Information

School Name \_\_\_\_\_

Band Director(s) \_\_\_\_\_

Estimated Date Attending ☐ April 22nd ☐ April 23rd ☐ April 24th

### Will your band be visiting the Concession Stand?

☐ Our Band(s) will be pre-ordering meals from the concession stand.

☐ Our Band(s) will be getting drinks & snacks only.

☐ Our Band(s) will NOT be visiting the Concession Stand.

If you are not visiting the concession stand for meals, you do not need to complete the bottom portion.

**WE WILL ONLY BE ORDERING ENTREES FOR BANDS THAT COMPLETE THIS FORM.**

Cheese Pizza Combo: \_\_\_\_\_ @ \$6.00 each= \$ \_\_\_\_\_  
Includes 2 slices (# of meals)

Pepperoni Pizza Combo: \_\_\_\_\_ @ \$6.00 each= \$ \_\_\_\_\_  
Includes 2 slices (# of meals)

Chick Fil A Sandwich Meals: \_\_\_\_\_ @ \$8.00 each= \$ \_\_\_\_\_  
(# of meals)

Paid With: \_\_\_\_\_

Total Due: \$ \_\_\_\_\_

**Payment is due prior to your mealtime. Checks made payable to Fighting Indians Band Boosters (FIBB) or cash.**